

OFFICIAL Buyers Guide



*Partitions and
Accessories Co.®*

Toilet Partitions | Toilet Accessories
ADA Requirements | Hand Dryers
Baby Changing Stations | Replacement Parts

"Your *Best* Local Source" Since 1978



ROC# 110352



Rev. Spring 2024

partitionsco.com sales@partitionsco.com
1220 S. Pasadena Mesa, AZ 85210 480-969-6606

Table of Contents

Toilet Partition Replacement Material and Stock Color Selection.	2-3
Typical Toilet Compartment.	4
Replacement Toilet Partition Hardware	
Hinges.	5
Latches	6
Kits	6-8
Keepers & Bumpers	10
Brackets.	9
Miscellaneous Components	11
Washroom Accessories	
Locks, Keys	16
Commercial Shower Accessories	16
Soap Dispensers, Shelves, Device Holders	12
Paper Holders	12
Paper Dispensers & Towel/Waste Receptacles	13-14
Baby Changing Stations.	14
Corner Guards	14
Hand Dryers.	15
Commercial Shower.	16
Access Panels.	17
Fire Extinguishers & Cabinets	17
Mirrors.	18
Grab Bars.	18
ADA Signs	18
Also Available	19
Index	20
Order Information	21

**All prices and availability are subject to change without notice.*

Partitions & Accessories Co.® **Commercial Building Specialties**

Serving Arizona and the construction industry since 1978



ASI Accurate - Black with
White Speckles Powder
Coated Baked Enamel



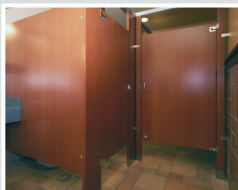
ASI Accurate Stainless Steel



ASI Accurate Dove Gray Phenolic



ASI Accurate Red Solid Plastic HDPE



ASI Accurate Cherry Plastic
Laminate

We are proud to be the largest stocking distributor in the state of Arizona. Having decades of experienced staff allows us to provide the design community with the highest expertise and care. Our many options include privacy, custom and standard configurations in powder coated steel, solid plastic (HDPE), stainless steel, phenolic and plastic laminate.

Your *Best* Building Specialty Source

Division 10 Specialties

Sales • Service • Installation

- Toilet Partitions
- Grab Bars
- Mirrors – S/S Frame or Frameless
- Fire Extinguishers & Cabinets
- Chalk/Tack/Marker Boards
- Lockers – metal, plastic, phenolic
- Mailboxes
- Corridor Railing
- Wall Protection
- Operable Walls/Accordion Walls
- Projection Screens
- Hospitality Accessories
- Shower Doors
- Electric Hand Dryers
- Curtain Track/Hospital Curtains
- Shower Curtains (Commercial)
- Corner Guards

Check with us if you need building specialties not shown in our catalog!

Stock Replacement Material

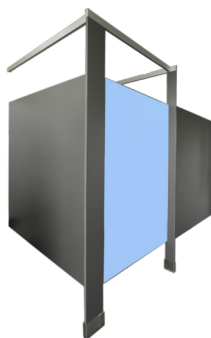
Doors

Powder Coated

Stocked in 5 colors*

Stainless Steel

Door Size	PC Price	SS Price
22" x 58"	\$202.00	\$498.00
24" x 58"	\$206.00	\$508.00
26" x 58"	\$210.00	\$518.00
30" x 58"	\$222.00	\$538.00
32" x 58"	\$232.00	\$548.00
34" x 58"	\$244.00	\$558.00
36" x 58"	\$256.00	\$568.00



Partition above shown with ASI's proprietary integrated Privacy™ System.

(send us your drawings for pricing complete stalls)

Panels

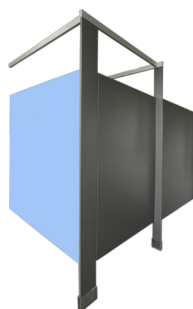
Powder Coated

Stocked in 5 colors*

Stainless Steel

Prices Do Not
Include Hardware
See pages 8-11

Panel Size	PC Price	SS Price
22" x 58"	\$138.00	\$460.00
28" x 58"	\$142.00	\$510.00
34" x 58"	\$150.00	\$560.00
46" x 58"	\$209.00	\$665.00
50" x 58"	\$214.00	\$695.00
55" x 58"	\$219.00	\$745.00
58" x 58"	\$228.00	\$765.00
60" x 58"	\$234.00	\$780.00
66" x 58"	\$256.00	\$825.00
70" x 58"	\$270.00	\$860.00



Pilasters

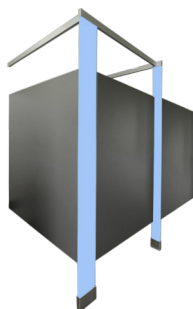
Powder Coated

Stocked in 5 colors*

Stainless Steel

Prices Do Not
Include Hardware
See pages 8-11

Pilasters Size	PC Price	SS Price
2" x 82"	\$90.00	\$198.00
3" x 82"	\$90.00	\$215.00
4" x 82"	\$90.00	\$225.00
5" x 82"	\$90.00	\$240.00
6" x 82"	\$90.00	\$255.00
7" x 82"	\$134.00	\$270.00
8" x 82"	\$134.00	\$285.00
10" x 82"	\$134.00	\$315.00
12" x 82"	\$134.00	\$345.00
16" x 82"	\$190.00	\$400.00
18" x 82"	\$190.00	\$425.00
20" x 82"	\$190.00	\$455.00
22" x 82"	\$190.00	\$485.00
24" x 82"	\$190.00	\$510.00



ALSO AVAILABLE:

- Powder Coated Additional Colors*
- Stainless Steel
- Plastic Laminate
- Phenolic
- Solid Plastic

*See stock color selection on page 3

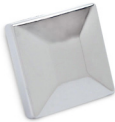
Post

Floor To Ceiling Post *Baked Enamel*
PA0120 \$119.00

Aluminum Post Floor to Ceiling
PAALU 0120 \$135.00



Post Base or Top
PA157 \$16.00



Post Cap
PAPC1 \$7.00

Screens

Wall Hung (WH) *Baked Enamel*

Size	Price	SS Price
18" x 48"	\$135.00	\$328.00
24" x 48"	\$151.00	\$355.00

See page 8 for Hardware Kit
PAPP9 \$33.00



(send us your drawings for pricing complete stalls)

Stock Color Selection

**Powder Coated & Satin Stainless Steel
on Doors, Panels and Pilasters**



920
Almond



945
Charcoal



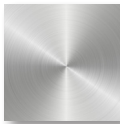
917
Adobe



990
Lt. Grey



930
Black*



304
Satin SS

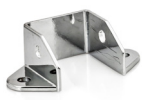
For non stock color selections, please call us.

**Limited quantities available*

*Contact us for quotes: Stainless, Plastic Laminate,
Phenolic, Solid Plastic, Solid Surface and FRP Partitions*

partitionsco.com | 480-969-6606 | sales@partitionsco.com

Typical Toilet Compartment



Headrail Bracket
HR-3



Top & Bottom Hinges
PA22 Set



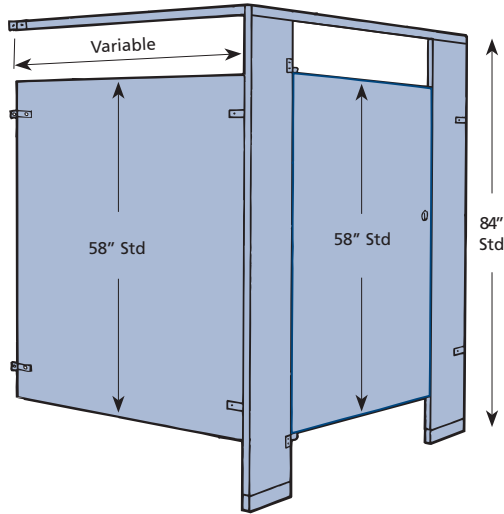
Headrail Brace
PAHR-1



Wall Bracket
& End Cap
PA180



Two Ear
SS or Chrome
Bracket
PA38



Privacy Indicator
Latch
PA33



Two Ear
Bracket
PA49



Latch
PA21



One Ear
Chrome Bracket
PA59



SS Pilaster
Shoe
PA149



Outswing
Bumper
PA60



Inswing
Keeper
PA08



Keeper Bumper
Concealed
PA36



Certified Small Women Owned Business (SWOB)

Replacement Toilet Partition Hardware

Hinges - Chrome Plated Die Cast



**Top & Bottom
Hinge Kit**
PA22 \$45.00



**Top Or Bottom
Hinge Bracket**
PA184 \$44.00



**1 1/4" OPENING
Top Hinge**
PA53-1 \$22.00



**1 1/4" OPENING
Bottom Hinge**
PA53-7 \$22.00



PA16*
PA16 \$52.00
(Stainless Steel Only)
Handed



PA43*
PA43 \$99.00
(Stainless Steel Only)
Handed



Gravity PA14*
PA14 \$74.00
(Chrome)
Handed

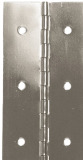


H.D. Alum Hinge PA98*
PA98 \$88.00
(Clear Anodized)
Handed

**Sold in sets of two (top & bottom)*

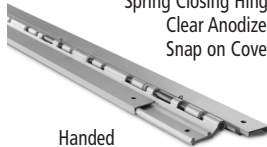
Hinges - Chrome / Stainless Steel

Spring Closing Hinge
Stainless Steel
Pre-Drilled



Handed

Overall Size: 54 1/2" x 3 3/8"
PA47469 \$129.00



Handed

Overall Size: 54 1/2" x 3 3/8"
PA8674 \$199.00



54" Universal Hinge
PA7469 \$125.00

Latches

Generation 2



**Chrome Plated
Die Cast**
PAN54 \$33.00



**Chrome Plated
Die Cast**
PAN54 HDCP \$46.00

Generation 3



**Chrome Plated
Die Cast**
PA33 \$33.00



Latches



**Chrome Plated
Die Cast
PA21 \$20.00**
(offset for inswing & outswing)



**Stainless Steel
PA23 \$29.00**



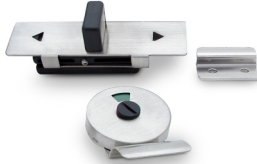
**Chrome Plated
Die Cast
PA09 \$20.00**
(offset for inswing & outswing)



**Latch
Heavy Duty
Aluminum
PA96 \$20.00**



**Slide Latch
PA1040 \$55.00**



**Slide Latch with Occupancy Indicator
PA9689 \$48.00**



**Slide Latch
PA6049 \$33.00**



**Slide Latch
PA54-MP1 \$37.00**



**Slide Latch
PA54-MP01 \$37.00**



**Latch Cover & Knob
PA54-MP \$33.00**



**3" Bolt Latch
PA5190 \$33.00**

Door Hardware Kits



**Gen. 2 ADA Kit
50-8261515
ADA Hardware Kit
Gravity Hinge
PA ADAHKG2C
Die Cast Chrome
\$65.00**



**Gen. 3
Door Hardware Kit
Hardware Set
Die Cast Chrome
PA HKG3C
\$69.00**



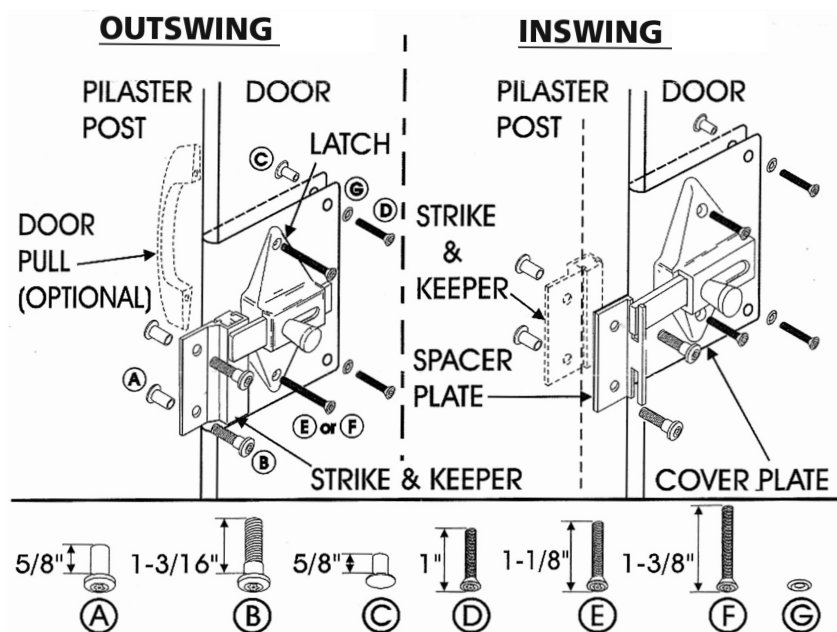
**Gen. 3
ADA Kit
Hardware Outswing
Die Cast Chrome
PA ADAHK3C
\$12.00**

Replacement Toilet Partition Hardware

Fix-It Latch Kits- For 1" Door

PAFLKO \$48.00

PAFLKI \$48.00



Partitions - Screws / Bolts

Theft Proof Bolts. All screws pre-packaged in lots of 50.



Designed to use with Pilaster Panels and Door Hardware. All chrome plated
1" or 1 1/4" \$100.00 per package



Security Head 5/8"
Coat Hook Screws
\$36.00 per package



Theft Proof or
Phillips Head
5/8" Panel Screws
\$39.00 per package

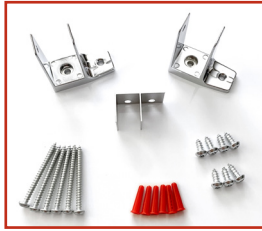


Theft Proof wall screws or
Phillips Head wall or floor screws
1 1/4" \$37.00 per package
2 1/2" \$54.00 per package

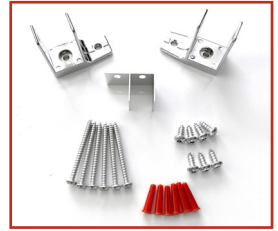
Bracket Kits



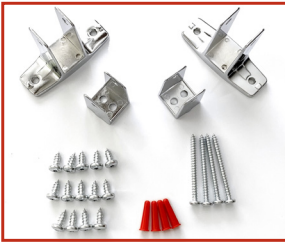
Pre-Pack #1
Powder Coated Steel
Stainless Steel Partitions
Mounting Style - FM/OB
PA PP#1
\$36.00



Pre-Pack #1
Powder Coated Steel
Stainless Steel Partitions
Mounting Style - FM/OB
PA PP#1
\$36.00



Pre-Pack #1A
Powder Coated Steel
Stainless Steel Partitions
Used with 2" Pilaster
Mounting Style - FM/OB
PA PP#1A
\$36.00



Pre-Pack #2
Powder Coated Steel
Stainless Steel Partitions
Mounting Style - FM/OB
PA PP#2
\$44.00



Pre-Pack #3
Powder Coated Steel
Stainless Steel Partitions
Mounting Style - FM/OB
PA PP#3
\$49.00











Pre-Pack #4
Powder Coated Steel
Stainless Steel Partitions
Mounting Style - FM/OB
Alcove Kit
PA PP#4
\$57.00



Pre-Pack #9
Powder Coated Steel
Stainless Steel Partitions
Urinal Screen Brackets
PA PP#9
\$33.00

Replacement Toilet Partition Hardware

Brackets Aluminum / Stainless Steel

Continuous Brackets for use at wall or panel			Opening Width (A)*	Bracket Length (B)	Price
PA2364-AL	 Bracket		1"	54-1/2"	\$58.00
* PA2365-AL	One Ear Bracket		1"	54-1/2"	\$118.00
PA2366-AL	Two Ear Bracket		1"	54-1/2"	\$129.00
PA2367-SS	 Bracket		1"	54-1/2"	\$77.00
* PA2368-SS	One Ear Bracket		1"	54-1/2"	\$158.00
PA2369-SS	Two Ear Bracket		1"	54-1/2"	\$219.00

* Also available 1 1/4" opening width



PA49-Chrome \$18.00
PA49-S/S \$48.00



PA95-Chrome \$18.00
PA95-S/S \$48.00



PA58-Chrome \$18.00
PA58-S/S \$48.00



PA59-Chrome \$18.00
PA59-S/S \$48.00



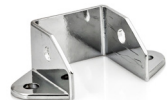
PA38-Chrome \$7.00
PA38-S/S \$19.00



2 Piece Set Chrome
PA39 \$18.00



4 Piece Set Chrome
PA165 \$20.00



Chrome Finish Headrail Bracket
HR-3 \$7.00



Floor Bracket
PA150 \$12.00



Floor Bracket 3" Width
PA99 \$14.00



Bracket and End Cap Headrail
PA180 \$6.00

Replacement Toilet Partition Hardware

Keepers & Bumpers Chrome Plated Die Cast



PA60 Inswing
\$19.00



PA60 Outswing
\$19.00



PA08 Inswing
\$19.00



PA08 Outswing
\$19.00



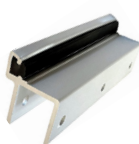
PA03 Inswing
\$19.00



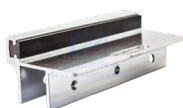
PA56 Inswing
\$19.00



PA36 Inswing
\$19.00



PA97-O Outswing
\$22.00



PA97-I Inswing
\$22.00



PA72 Adjustable
\$32.00



**Keeper Bumper
Inswing
PA36-MP-1**
\$19.00



**Keeper Bumper
Inswing
PA56-1**
\$19.00



**Inswing
PA56-2**
\$19.00



**Flat Stop
Inswing
PA66-1**
\$19.00



**Flat Keeper
Outswing
PA66** \$19.00



**Door Stop/Bumper
Pilaster Mounted
PA4155** \$28.00



**Door Stop/Bumper
PA4120** \$10.00

**Ultimate Privacy Powder Coated
or Aluminum Privacy Strips
58 inch lengths
Gen 2**



STRIKE SIDE
PRIVACY STRIP VIEW



HINGE SIDE
PRIVACY STRIP VIEW

PA-UP1 \$58.00

PA-UP2 \$58.00

***Special Order**

Miscellaneous Components



1-1/4" Stainless Steel
Adjustable Pilaster Post
Floor Bracket
PA8513 10-12" \$98.00
PA8503 12-14" \$111.00



Headrail
B-Series \$10.00/ft.



Headrail
PAHR-1 \$10.00/ft.



Double Door Pull
Handicap/ADA
PA5440 \$18.00

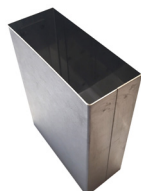


Stainless Steel Shoe
PA149 Height 3"

2" \$17.00	3" \$18.00	4" \$20.00
5" \$21.00	6" \$22.00	7" \$23.00
8" \$24.00	10" \$28.00	12" \$32.00
16" \$34.00	18" \$36.00	20" \$38.00
22" \$40.00	24" \$44.00	



Door Pull
PA152 \$9.00



Stainless Steel Shoe
PA149-PL Height 3"

2" \$17.00	3" \$18.00	4" \$20.00
5" \$21.00	6" \$22.00	7" \$23.00
8" \$24.00	10" \$28.00	12" \$32.00
18" \$36.00	22" \$40.00	24" \$44.00

Hooks



Coat Hook & Bumper
Polished Chrome
PA07 \$8.00



Coat Hook & Bumper
Polished Chrome
PA26 \$8.00

Washroom Accessories



Automatic

Touch Free LTX Soap Dispenser

Compact, easy-to-use unit, ideal for tight spaces. Limits cross contamination. Batteries and soap not included. White or SS
Capacity: 40 fluid ounces.
Overall Size: 10 1/2" x 4" x 5 3/4"
PALT-12 \$36.00

Surface Mounted Horizontal Liquid Soap Dispenser

Stainless steel with a #4 satin finish.
Capacity: 40 fluid ounces.
Overall size: 8 1/4" x 4 3/4" x 3"
PA0345 \$49.00



Vertical Soap Dispenser

Stainless steel with a #4 satin finish. Contains an all purpose soap valve.
Capacity: 40 fluid ounces.
Overall Size: 4 3/4" x 8 1/8" x 5 1/4"
PA0347 \$49.00

Straight Liquid Type

34-ounce capacity
PA0147



4" Spout \$50.00

6" Spout \$57.00



Polyglobe Threaded Bottle Cap
PA19-42 \$6.00



Polyglobe Bottle
PA1322 \$16.00

Shelves



Stainless Shelving

PA0692

12" long \$47.00

18" long \$54.00

24" long \$62.00

Call us for additional sizes



****New Item****

Klutch Mobile Device Holder Satin Finish Wall or Stall Mounted with front hook



PA635 \$128.00

(Devices shown not included)

Paper Holders

When in doubt, send us a sample!



ADA Toilet Tissue Holders

Die Cast Aluminum.

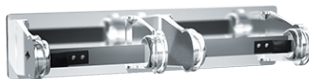
Pilfer Proof Locking Device

Overall Size (Double Roll):

13" x 1 3/4" x 4 3/4"

Double Roll-PA0264 \$29.00

Single Roll-PA0263 \$17.00



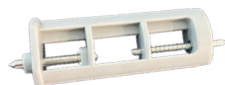
Toilet Tissue Dispensers

Overall Size (Double Roll):

12 3/8" x 2 3/4" x 4 1/4"

PA0715 Double Roll \$20.00

PA0710 Single Roll \$15.00



Part No. R002

\$15.00



Part No. R004

\$15.00



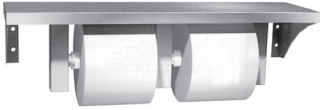
Part No. 273-103

\$10.00

Washroom Accessories

Paper Holders

When in doubt, send us a sample!



Shelf with Toilet Paper Holder
Overall Size: 18" x 5"
PA0697 GAL \$69.00

**Surface Mounted
Multi-Roll Toilet
Tissue Dispenser**
PA0030 \$71.00
Overall Size:
5 3/4" x 4" x 10 3/4"



**Jumbo Roll SS
Toilet Tissue Dispenser**
Overall Size: 10 5/8" x 4 1/2" x 10 5/8"
PA0042 GAL \$66.00



Holds 2 1/2" or 3"
diameter core.
Door cabinet and
mounting plate is
18 gauge type 304 SS
with a satin finish.
Features viewing slot(s)
to reveal toilet tissue
rolls inside. Includes
tumbler lock for security



**Twin 9' Jumbo Roll
Toilet Tissue Dispenser**
Overall Size: 20 3/4" x 6 1/4" x 11 1/2"
PA0040 \$191.00

Paper Towel Dispensers



**8" Recessed
Automatic Touchless
Paper Towel Dispenser**
SS. Overall Size:
13.3" x 16.4" x 8"
PA59466A \$298.00
Surface Mount Kit Available.



**Surface Mounted
Roll Towel Dispenser**
Hi-impact plastic.
8" diameter roll.
PA54338 \$88.00

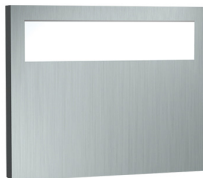


**Surface Mounted
Dispenser**
Stainless Steel
PA0210 \$56.00



**Surface Mounted
Towel Dispenser for
Compact Areas**
Stainless Steel
PA0215 \$58.00

**Surface Mounted
Seat Cover Dispenser**
Stainless steel finish. Loads
from bottom. Capacity 250
paper seat covers.
Overall Size:
15 3/4" x 11" x 2 1/4"
PA0477SM \$47.00



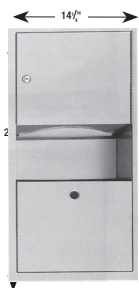
Specimen Pass Thru **PA8154 \$311.00**
Spacer Sleeve **PA8155 \$133.00**



Washroom Accessories

Towel / Waste Receptacles

*Verify rough wall opening with your order.



Paper Towel Dispenser and Waste Receptacle

Provided with removable 2 gal. (7.6L) waste container.

PA0462AD \$199.00

Recessed unit 4" deep.

Rough wall opening 12 3/4" x 26 1/2" x 4 1/4" *



Paper Towel Dispenser and Waste Receptacle

Removable 12 gal. (46L) Stainless steel waste receptacle.

PA0469 \$404.00

Recessed unit 4" deep.

Rough wall opening 15 3/4" x 54 1/2" x 4 1/4" *



Surface Mounted Napkin Disposal

Stainless steel finish.

PA0852 \$46.00



Surface Mounted Waste Receptacle 12 gal.

PA0826 \$171.00

Baby Changing Stations

- Engineered and tested to withstand a static load of 200 pounds.
- FDA approved high-impact plastic. (Also available in stainless steel.)
- Sanitary, disposable platform liner. PA-PL.
- Safety holding straps.
- Five Year Manufacturer's Warranty
- Shipping weight 40 pounds.

*Note SS Baby Changing Stations Available

Changing Station

KB-300-00 Cream \$333.00

KB-300-01 Gray \$333.00

*Additional colors and styles available via special order



Unit Dimensions

Height: 22" Width: 35"

Depth: 4" Closed

Extension from Wall when Opened: 22 1/2"

Ask us about adult changing stations or additional styles and mounting options

Corner Guards

18 ga. SS 90° angle



Overall Size:
1 1/2" x 1 1/2" x 48"

**Model WI-2
\$88.00**



Overall Size:
3 1/2" x 3 1/2" x 48"

**Model WI-4
\$100.00**

Custom Sizes Available

TACKBOARDS WHITEBOARDS MARKERBOARDS

We have available a complete line of Visual Display Products and can customize to your individual needs at a competitive price.

Ask About Sizes

Hand Dryers



**Surface Mounted
ADA-Compliant
Hand Dryer**
Steel cover with epoxy
paint
PA0165 \$318.00

Specifications:
Voltage/Frequency: 100VAC-240VAC 50Hz/60Hz
Net Weight: 9.6 lbs. (4.34 kg)
Dimensions: 11 ¼" H x 11 ½" W x 4" D
(Conforms to ADA)
Wattage: 1620 W



**Surface Mounted
ADA-Compliant
Hand Dryer**
Sprayed Nickel or White
PAHU02 \$899.00

Specifications:
Voltage/Frequency: 120/270 VAC 50Hz/60Hz
Net Weight: 8.2 lbs.
Dimensions: (H) 5 ¾" x (W) 17 7/8" x (D) 10 ¾"
Wattage: 1000 W



*Ask about
the ADA
Recess Kit*



*Excel dryers are the
only hand dryers
that are Certified
Made in the USA.*



Excel Thin Air Hand Dryer

- Dries hands 3 times faster (10-15 seconds)
- Uses 80% less energy than other hand dryers
 - Stainless Steel
 - 110-120 VAC

XL-SB Xlerator® \$678.00

- Meets ADA requirements
- 900 Watts (Heat On), 300 Watts (Heat Off)
- Adjustable speed and sound control
 - Available in White and SS
 - 110-120 VAC

Overall Size: 9 ½" x 13 1/16" x 3 1/16"

TA-ABS White \$449.00

TA-SB SS \$505.00

**WORLD
DRYER**



AMERICAN SPECIALTIES, INC.

dyson



PRICES BY QUOTATION

*Please call or e-mail us your request for
information on our complete line of dryers.*

Washroom Accessories

Commercial Shower Accessories



Commercial Shower Curtain

All sewing is lock stitched. Vinyl Film in White Opaque. Fed. Spec. 1-C780A Style 1 and L-P375C Type II Class 1

VF800

36" x 72"	\$24.00
42" x 72"	\$27.00
48" x 72"	\$30.00
60" x 72"	\$31.00
72" x 72"	\$38.00

Stainless Steel Shower Rod with Flanges

1214-36	\$42.01
1214-48	\$49.57
1214-60	\$57.13
1214-72	\$64.71



Shower Curtain Hook

1 5/16" opening for round rod
.091 Stainless Steel Finish
\$2.00 each



Phenolic Shower Seat

(left or right hand)

PA8206

L \$416.00

R \$416.00



Specify Manufacturer
PA-Key \$8.00



PA-Key/Lock \$21.00
Bring Sample

Check with us if you need building specialties
not shown in our catalog or website!

Access Panel

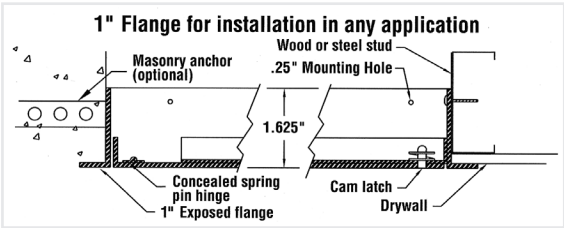


White
Paintable
Surface

PA L-MPG

Non-rated, multi-purpose access panel
for all applications

- PA L-MPG 8" x 8" \$49.00
- PA L-MPG 12" x 12" \$59.00
- PA L-MPG 18" x 18" \$77.00
- PA L-MPG 24" x 24" \$121.00



Top Elevation

Fire Extinguishers and Cabinets

Full line of extinguishers and cabinets available.



Cabinet

White
Outside trim dim. 27 1/2" x 13"
6" Deep, 4" Recess in Wall

Full Glass*

PA2409-6R-FG
\$151.00

Half Vertical Glass*

PA2409-6R-VDuo
\$153.00



Cabinet

Stainless Steel
Outside trim dim. 27 1/2" x 13"
6" Deep, 4" Recess in Wall

Full Glass*

PASS2409-6R-FG
\$291.00

Half Vertical Glass*

PASS2409-6R-VDuo
\$296.00



Surface
Mount
Cabinet
PA2409-SMFG
\$179.00

*Fire Extinguishers sold separately



Fire
Extinguisher
PAMP-5
\$93.00



Fire
Extinguisher
PAMP-10
\$119.00

FIRE
EXTINGUISHER

DECAL
\$10.00

PAFE DC-Decal
18" x 1"
\$10.00

Washroom Accessories

Mirrors

Contact us for plate glass mirror. Polished edge and beveled available.

*Fixed Tilt Available



Channel Framed Mirrors

PA1824 \$79.00

PA1830 \$89.00

PA1836 \$99.00

PA2436 \$119.00



S/S Reflective Surface Mirrors

Without frames, hardboard backing.

PA 18" x 36" S \$157.00

PA 24" x 36" S \$169.00

Grab Bars

Custom designed and finish available upon request.



Grab Bars - 1 1/2" Diameter

18 Gauge, (.50) Type 18-8

Satin Stainless Steel

Concealed Snap Flanges

150S 12" \$34.00

150S 18" \$38.00

150S 24" \$44.00

150S 30" \$46.00

150S 36" \$48.00

150S 42" \$50.00

150S 48" \$54.00



Two Wall Grab Bar

42" x 54"

150S-50 \$151.00

Signs

Stores • Hotels • Schools • Offices • Restaurants • Other Public Places



PA3801



PA3802



PA3803



PA3804



PA3805



PA3806

Pictogram Bathroom Sign

Meets ADA requirements with and without HCPD

Pictogram: 1/32" raised tactile x 6" min.

Durable plastic material.

Stock Colors: Black with white lettering

Overall Size: 6" x 9"

PA3801 NON-ADA Men \$23.00

PA3802 Men HDCP \$23.00

PA3803 NON-ADA Women \$23.00

PA3804 Women HDCP \$23.00

PA3805 NON-ADA Unisex \$23.00

PA3806 Men/Women HDCP \$23.00

Also Available

PA3811 Tactile Exit Sign \$19.00

DOOR TO REMAIN UNLOCKED DURING BUSINESS HOURS

54750 \$19.00 each

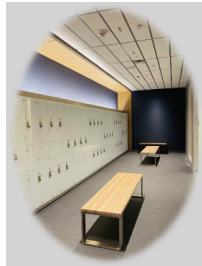
Also Available



sales@partitionsco.com

Partitions|Accessories|Lockers|Corner Guards & Wall Protection
Visual Display Boards|Fire Extinguishers|Cabinets|Operable Walls
Rolling Window Shades|Mirrors|Shower Glass

*Contact us for quotes on any of these items,
ask about our overstock inventory!*



**Ask about our overstock washroom accessories.*

Index

Access Panels	17
ADA Signs	18
Baby Changing Stations	14
Brackets	9
Commercial Shower Accessories	16
Corner Guards	14
Fire Extinguishers & Fire Extinguisher Cabinets . . .	17
Grab Bars	18
Hand Dryers	15
Hinges	5
Keepers & Bumpers	10
Keys	16
Kits	6-8
Latches	6
Mirrors	18
Miscellaneous Components	11
Paper Towel Dispensers	13
Paper Holders	12-13
Sanitary Napkin Disposals	14
Shelves	12
Shower Accessories	16
Soap Dispensers	12
Specimen Passthrough	13
Toilet Partition Replacement Material and Stock Color Selection	2-3
Towel/Waste Receptacles	14
Toilet Compartment (Typical)	4

Order Information

There are several convenient ways to order:

1. Phone: 480-969-6606 or 1-800-795-6607
 2. E-mail: sales@partitionsco.com
 3. Website: partitionsco.com
- Online shopping cart now available!

Regarding Damages Or Shortages of Shipments

Your merchandise was received by the truck line in good condition, so any damages or shortages are the responsibility of the carrier; therefore note the following points:

1. Please inspect your shipment carefully upon arrival. Look for any apparent damage and also see if the number of pieces matches the total as listed on the freight bill.
2. Any damages or shortages must be noted in detail on all copies of the freight bill by the driver, and signed by him. Do not sign the freight bill without these notations being made, as they are absolutely necessary in order for you to file your claim.
3. If someone other than yourself is going to receive your shipment, be sure that they are aware of this procedure.
4. **In the event that there is any damage or shortage, ask the driver to have his company supply you with necessary claim forms and procedures.**

Payment Terms:

We accept: Visa  MasterCard  American Express 

F.O.B. our warehouse with cost of freight added to material price.

Applicable taxes will be added.

*Large orders subject to 3% CC Fee

All prices and availability are subject to change without notice.

RETURNING MATERIAL

If you find that the material received does not fit your needs contact us immediately.

No returned merchandise will be accepted unless our customer service department has given prior authorization. All transportation charges must be pre-paid by the purchaser and are not refundable. Material must be returned in original cartons or in an acceptable shipping manner to avoid damage. All returned material subject to a minimum 35% restocking charge.

Any dispute will be settled only by Arizona law in Maricopa County.

**Call 480-969-6606 or 1-800-795-6607
for additional catalogs.**

If you need something not shown in our catalog, let us know.

We've Got You Covered Since 1978



Partitions & Accessories Co.®

1220 S. Pasadena | Mesa, AZ 85210

ROC# 110352

26770