

OFFICIAL Buyers Guide



[®] *Partitions and
Accessories Co.*

Toilet Partitions | Toilet Accessories
ADA Requirements | Hand Dryers
Baby Changing Stations | Replacement Parts

“Your *Best* Local Source” Since 1978



ROC# 110352



Rev. July 2025

partitionsco.com sales@partitionsco.com
1220 S. Pasadena Mesa, AZ 85210 480-969-6606

Table of Contents

Toilet Partition Replacement Material and Stock Color Selection	2-3
Typical Toilet Compartment	4
Replacement Toilet Partition Hardware	
Hinges	5
Latches	5-6
Door Hardware Kits	6-7
Partitions - Screws/Bolts	7
Bracket Kits	8
Brackets	9
Keepers & Bumpers	10
Hooks & Bumpers	10
Miscellaneous Components	10-11
Washroom Accessories	
Grab Bars	11
Seat Cover Dispenser, Specimen Pass Through	11
Paper Holders	12
Towel Dispensers/Waste Receptacles	13
Soap Dispensers, Shelves, Device Holders	14
Baby Changing Stations	14
Corner Guards	15
Hand Dryers	15
Commercial Shower Accessories	16
Locks, Keys	16
Mirrors	16
Matte Black Accessories	17
Access Panels	18
Fire Extinguishers & Cabinets	18
ADA Signs	19
Visual Display	19
Index	20
Order Information	21

**All prices and availability are subject to change without notice.*

Partitions & Accessories Co. *Commercial Building Specialties*

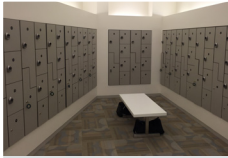
Serving Arizona and the construction industry since 1978



Dove Gray Phenolic Partitions



Operable Walls



Phenolic Lockers



Red Solid Plastic HDPE



Rolling Shades

Your *Best* Building Specialty Source

Division 10 Specialties

Sales • Service • Installation

We are proud to be the largest stocking distributor in the state of Arizona. Our toilet partitions options include privacy, custom and standard configurations in powder coated steel, solid plastic (HDPE), stainless steel, phenolic and plastic laminate.

Product Offerings:

- Toilet Partitions
- Washroom Accessories
- Grab Bars
- Mirrors – Frame or Frameless
- Fire Extinguishers & Cabinets
- Marker & Tack Boards
- Operable Acoustic & Glass Walls
- Lockers
- Wall Protection
- Hospitality Accessories
- Shower Doors
- Electric Hand Dryers
- Track/Hospital/Privacy Curtains
- Corner Guards
- Rolling Shades

Check with us if you need building specialties not shown in our catalog!

Stock Replacement Material

Doors

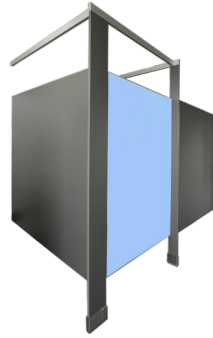
Includes Standard Hardware

Powder Coated

Stocked in 5 colors*

Stainless Steel

Door Size	PC Price	SS Price
22" x 58"	\$271.00	\$567.00
24" x 58"	\$275.00	\$577.00
26" x 58"	\$279.00	\$587.00
30" x 58"	\$286.00	\$607.00
32" x 58"	\$301.00	\$617.00
34" x 58"	\$325.00	\$639.00
36" x 58"	\$337.00	\$649.00



Partition above shown with ASI's proprietary Integrated Privacy™ System.

(send us your drawings for pricing complete stalls)

Panels

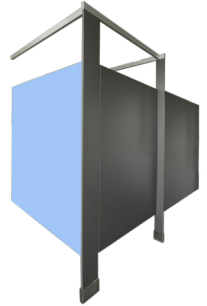
Includes Standard Hardware

Powder Coated

Stocked in 5 colors*

Stainless Steel

Panel Size	PC Price	SS Price
22" x 58"	\$189.00	\$504.00
28" x 58"	\$194.00	\$554.00
34" x 58"	\$220.00	\$604.00
46" x 58"	\$253.00	\$649.00
50" x 58"	\$258.00	\$709.00
55" x 58"	\$266.00	\$739.00
58" x 58"	\$272.00	\$789.00
60" x 58"	\$278.00	\$809.00
66" x 58"	\$300.00	\$869.00
70" x 58"	\$314.00	\$904.00



Pilasters

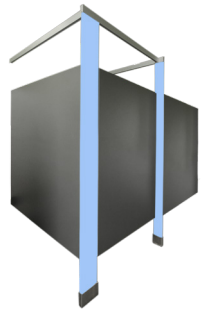
Includes Standard Hardware

Powder Coated

Stocked in 5 colors*

Stainless Steel

Pilasters Size	PC Price	SS Price
2" x 82"	\$156.00	\$264.00
3" x 82"	\$157.00	\$282.00
4" x 82"	\$159.00	\$294.00
5" x 82"	\$160.00	\$310.00
6" x 82"	\$161.00	\$326.00
7" x 82"	\$206.00	\$342.00
8" x 82"	\$207.00	\$358.00
10" x 82"	\$211.00	\$392.00
12" x 82"	\$215.00	\$426.00
16" x 82"	\$273.00	\$483.00
18" x 82"	\$275.00	\$510.00
20" x 82"	\$277.00	\$542.00
22" x 82"	\$279.00	\$574.00
24" x 82"	\$283.00	\$603.00



ALSO AVAILABLE:

- Powder Coated Additional Colors*
- Phenolic
- Plastic Laminate
- Solid Plastic

Contact us
for Project
Quotes

*See stock color selection on page 3

Stock Replacement Material

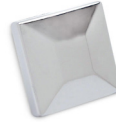
Post

Floor To Ceiling Post *Baked Enamel*
PA0120 \$119.00

Floor to Ceiling Post *Aluminum*
PAALU 0120 \$135.00



Post Base or Top
PA157 \$16.00



Post Cap
PAPC1 \$7.00

Screens

Includes Standard Hardware

Wall Hung (WH) *Baked Enamel*

Size	Price	SS Price
18" x 48"	\$168.00	\$361.00
24" x 48"	\$184.00	\$388.00



(send us your drawings for pricing complete stalls)

Stock Color Selection

**Powder Coated & Satin Stainless Steel
on Doors, Panels and Pilasters**



920
Almond



945
Charcoal



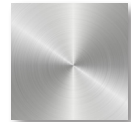
917
Adobe



990
Lt. Grey



930
Black*



304
Satin SS

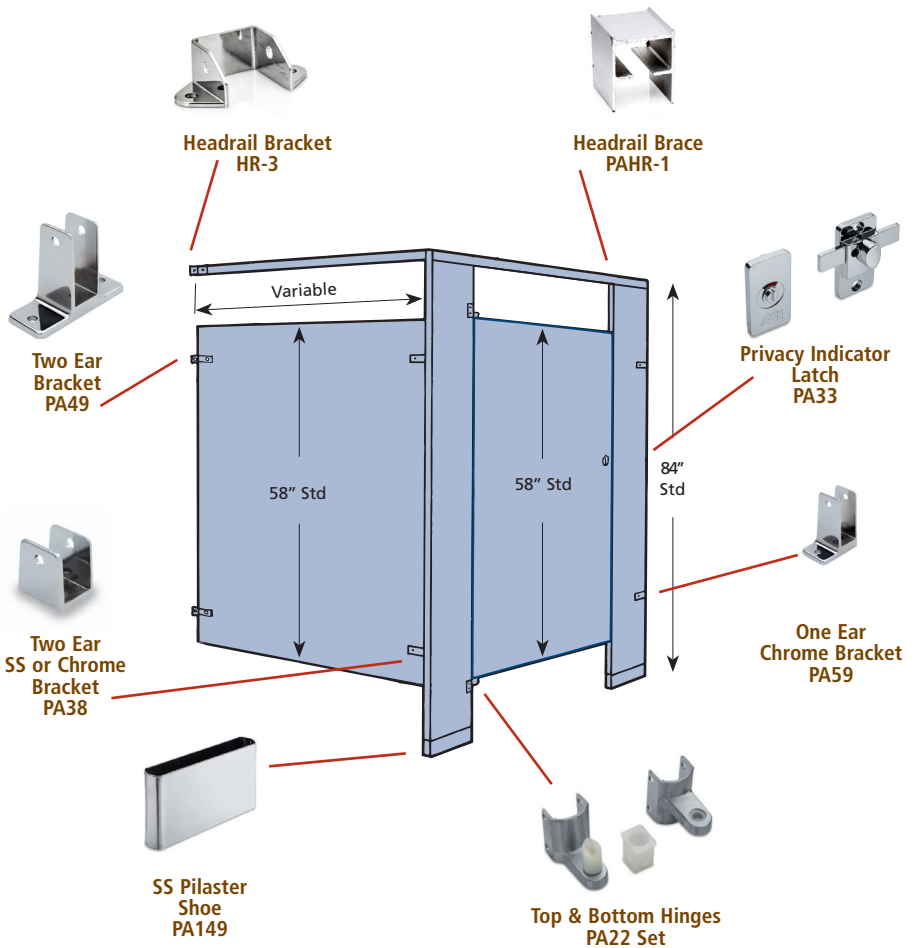
For non stock color selections, please call us.

**Limited quantities available*

*Contact us for quotes: Plastic Laminate,
Phenolic, Solid Plastic, and Solid Surface Partitions*

partitionsco.com | 480-969-6606 | sales@partitionsco.com

Typical Toilet Over Head Braced Compartment



Ask Us!

OTHER MOUNTING STYLES AVAILABLE:

Floor Anchored, Ceiling Hung, Floor to Ceiling
Ultimate Privacy, Maximum Privacy

OTHER FINISHES:

Solid Plastic, Phenolic, Plastic Laminate
Solid Surface and more

Replacement Toilet Partition Hardware

Hinges - Chrome Plated Die Cast



**Top & Bottom
Hinge Kit**
PA22 \$45.00



**Top Or Bottom
Hinge Bracket**
PA184 \$44.00



**1 1/4" OPENING
Top Hinge**
PA53-1 \$22.00



**1 1/4" OPENING
Bottom Hinge**
PA53-7 \$22.00



PA16*
PA16 \$54.00
(Stainless Steel)
Handed



PA43*
PA43 \$99.00
(Stainless Steel)
Handed



Gravity PA14*
PA14 \$67.00
(Chrome)
Handed

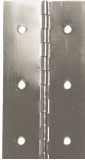


H.D. Alum Hinge PA98*
PA98 \$98.00
(Clear Anodized)
Handed

*Sold in sets of two (top & bottom)

Hinges - Aluminum / Stainless Steel

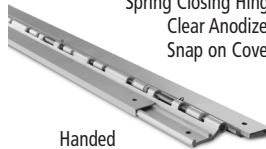
Spring Closing Hinge
Stainless Steel
Pre-Drilled



Handed

Overall Size: 57 1/2" x 3 3/8"
PA47469 \$115.00

Spring Closing Hinge,
Clear Anodized,
Snap on Covers



Handed

Overall Size: 54" x 3 3/8"
PA8684 \$199.00

Universal, Gravity
Closing, Hinge,
304 SS, Pre-Drilled



57" Universal Hinge
PA7469 \$125.00

Latches



**Chrome Plated
Die Cast**
PA33SS \$39.00



**Chrome Plated
Die Cast**
PA33 \$33.00



**Chrome Plated
Hadrian Latch**
PA129270 \$39.00



**Top and Bottom
Hadrian Hinge Kit**
PA63860 \$119.00

Latches



**Chrome Plated
Die Cast
PA21-O \$20.00**
(offset for inswing & outswing)



**Chrome Plated
Die Cast
PA21 \$20.00**



**Chrome Plated
Die Cast
PA09-O \$20.00**
(offset for inswing & outswing)



**Chrome Plated
Die Cast
PA09 \$20.00**



**Slide Latch
PA1040 \$35.00**



**Latch Heavy Duty
Aluminum
PA96 \$20.00**



**Slide Latch with
Occupancy Indicator
PA9689 \$41.00**



**Slide Latch
PA6049 \$27.00**



**Slide Latch
PA54-MP1 \$37.00**



**Stainless Steel
PA23 \$21.00**



**Slide Latch
PA54-MP01 \$37.00**

Door Hardware Kits



**Gen. 3
Door Hardware Kit
Hardware Set
Die Cast Chrome
PA HKG3C
\$69.00**



**Gen. 3
ADA Kit
Hardware Outswing
Die Cast Chrome
PA ADAHK3C
\$14.00**

Replacement Toilet Partition Hardware

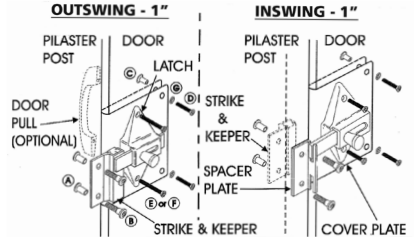
Fix-It Latch Kits- For 1" Door



PAFLKO \$48.00



PAFLKI \$48.00



Partitions - Screws / Bolts

All fasteners pre-packaged in lots of 10 or 50.

PA#	Description	Qty in lot	Price
PA219259-10	Security Bolt and Nut SS 10-24 x 1-1/4"	10	\$13.00
PA213253-10	Security Bolt and Nut Chrome 10-24 x 1-1/4"	10	\$6.00
PA219259-50	Security Bolt and Nut SS 10-24 x 1-1/4"	50	\$61.00
PA213253-50	Security Bolt and Nut Chrome 10-24 x 1-1/4"	50	\$25.00
PA88259-10	Security Bolt and Nut SS 10-24 x 1"	10	\$12.00
PA88253-10	Security Bolt and Nut Chrome 10-24 x 1"	10	\$5.00
PA88259-50	Security Bolt and Nut SS 10-24 x 1"	50	\$59.00
PA88253-50	Security Bolt and Nut Chrome 10-24 x 1"	50	\$24.00
CTR-SPC	Security Screw Chrome #8 x 5/8"	10	\$3.00
CTR-SPC	Security Screw Chrome #8 x 5/8"	50	\$14.00
CTR-SPC	Security or Phillips Screw Chrome #12 x 5/8"	10	\$4.00
CTR-SPC	Security or Phillips Screw Chrome #12 x 5/8"	50	\$15.00
CTR-SPC	Security or Phillips Screw SS #14 x 1-1/2"	10	\$6.00
CTR-SPC	Security or Phillips Screw SS #14 x 1-1/2"	50	\$27.00
CTR-SPC	Security or Phillips Screw SS #14 x 2-1/2"	10	\$7.00
CTR-SPC	Security or Phillips Screw SS #14 x 2-1/2"	50	\$33.00

A
B
C
D



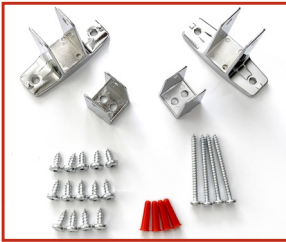
Bracket Kits



Pre-Pack #1
Powder Coated Steel
Stainless Steel Partitions
Mounting Style - FM/OB
PA PP#1
\$36.00



Pre-Pack #1A
Powder Coated Steel
Stainless Steel Partitions
Used with 2" Pilaster
Mounting Style - FM/OB
PA PP#1A
\$36.00



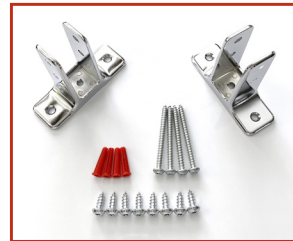
Pre-Pack #2
Powder Coated Steel
Stainless Steel Partitions
Mounting Style - FM/OB
PA PP#2
\$44.00



Pre-Pack #3
Powder Coated Steel
Stainless Steel Partitions
Mounting Style - FM/OB
PA PP#3
\$49.00












Pre-Pack #4
Powder Coated Steel
Stainless Steel Partitions
Mounting Style - FM/OB
Alcove Kit
PA PP#4
\$57.00



Pre-Pack #9
Powder Coated Steel
Stainless Steel Partitions
Urinal Screen Brackets
PA PP#9
\$33.00

Replacement Toilet Partition Hardware

Brackets Aluminum / Stainless Steel

Continuous Hinge Brackets			Opening Width	Bracket Length	Price
PA2364-AL	 Bracket		1"	54"	\$58.00
PA2365-AL	One Ear Bracket		1"	54"	\$118.00
PA2366-AL	Two Ear Bracket		1"	54"	\$128.00
PA2364-SS	 Bracket		1"	57"	\$68.00
PA2365-SS	One Ear Bracket		1"	57"	\$158.00
PA2366-SS	Two Ear Bracket		1"	57"	\$178.00
PA2359-SS	One Ear Bracket		1-1/4"	57"	\$168.00



PA49-Chrome \$18.00
PA49-S/S \$48.00



PA95-Chrome \$18.00
PA95-S/S \$48.00



PA58-Chrome \$18.00
PA58-S/S \$48.00



PA59-Chrome \$18.00
PA59-S/S \$48.00



**2 Piece Set
Chrome
PA39 \$12.00**



**4 Piece Set
Chrome
PA165 \$20.00**



**Chrome Finish
Headrail Bracket
HR-3 \$7.00**



**Floor Bracket
PA150 \$12.00**



**Floor Bracket
3" Width
PA99 \$14.00**



PA38-Chrome \$7.00
PA38-S/S \$19.00

CALL OR COME IN. WE ARE HERE TO HELP.

Replacement Toilet Partition Hardware

Keepers Chrome Plated Die Cast



PA60 Inswing
\$19.00



PA60 Outswing
\$19.00



PA08 Inswing
\$19.00



PA08 Outswing
\$19.00



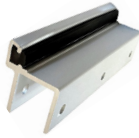
PA03 Inswing
\$19.00



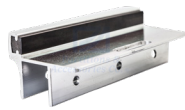
PA56 Inswing
\$19.00



PA36 Inswing
\$19.00



PA97-O Outswing
\$22.00



PA97-I Inswing
\$22.00



PA72 Adjustable
\$19.00



**Keeper Bumper
Inswing**
PA36-MP-1
\$19.00



**Keeper Bumper
Inswing**
PA56-1
\$19.00



Inswing
PA56-2
\$19.00



**Flat Stop
Inswing**
PA66-1
\$19.00



**Flat Keeper
Outswing**
PA66 \$19.00

Hooks & Bumpers



**Door Stop/Bumper
Pilaster Mounted**
PA4155 \$28.00



Door Stop/Bumper
PA4120 \$10.00



**Coat Hook & Bumper
Polished Chrome**
PA07 \$8.00

**Coat Hook & Bumper
Polished Chrome**
PA26 \$8.00

Miscellaneous Components



**Double Door Pull
Handicap/ADA**
PA5440 \$18.00



Door Pull
PA152 \$9.00

Miscellaneous Components



**1-1/4" Stainless Steel
Adjustable Pilaster Post
Floor Bracket**
PA8513 10-12" \$98.00
PA8503 12-14" \$111.00



**Headrail
B-Series \$12.00/ft.**



**Headrail
PAHR-1 \$12.00/ft.**



**Stainless Steel Shoe
PA149 Height 3"**

2" \$17.00	3" \$18.00	4" \$20.00
5" \$21.00	6" \$22.00	7" \$23.00
8" \$24.00	10" \$28.00	12" \$32.00
16" \$34.00	18" \$36.00	20" \$38.00
22" \$40.00	24" \$44.00	



**Stainless Steel Shoe
PA149-PL Height 3"**

2" \$17.00	3" \$18.00	4" \$20.00
5" \$21.00	6" \$22.00	7" \$23.00
8" \$24.00	10" \$28.00	12" \$32.00
18" \$36.00	22" \$40.00	24" \$44.00

Washroom Accessories

Grab Bars *Custom designed and finish available upon request.*



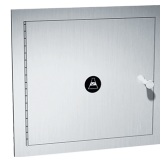
Grab Bars - 1 1/2" Diameter
18 Gauge, (.50) Type 18-8
Satin Stainless Steel
Concealed Snap Flanges

150S 12" \$34.00	150S 36" \$48.00
150S 18" \$38.00	150S 42" \$50.00
150S 24" \$44.00	150S 48" \$54.00
150S 30" \$46.00	



Two Wall Grab Bar
42" x 54"
150S-50 \$151.00

**Surface Mounted
Seat Cover Dispenser**
Stainless steel finish. Loads
from bottom. Capacity 250
paper seat covers.
Overall Size:
15 3/4" x 11" x 2 1/4"
PA0477SM \$47.00



Specimen Pass Thru PA8154 \$311.00
Spacer Sleeve PA8155 \$133.00

Washroom Accessories

Paper Holders *When in doubt, send us a sample!*



Toilet Tissue Dispensers
Overall Size (Double Roll):
12 ³/₈" x 2 ³/₄" x 4 ¹/₄"
PA0715 Double Roll \$20.00



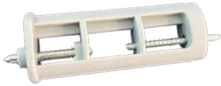
Toilet Tissue Dispensers
Overall Size (Single Roll):
6 ³/₈" x 2 ³/₄" x 4 ¹/₄"
PA0710 Single Roll \$15.00



Toilet Tissue Dispenser Single
Satin SS
PA7305-2-S Double Roll \$27.00



Toilet Tissue Dispenser Single
Satin SS
PA7305-S Single Roll \$19.00



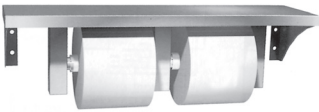
Part No. R002
\$15.00



Part No. R004
\$15.00



Part No. 273-103
\$10.00



Shelf with Toilet Paper Holder
Overall Size: 18" x 5"
PA0697 GAL \$69.00

**Surface Mounted
Multi-Roll Toilet
Tissue Dispenser**
PA0030 \$69.00
Overall Size:
5 ³/₄" x 4" x 10 ³/₄"



**Jumbo Roll SS
Toilet Tissue Dispenser**
Overall Size: 10 ⁵/₈" x 4 ¹/₂" x 10 ⁵/₈"
PA0042 GAL \$51.00



Holds 2 ¹/₂" or 3"
diameter core.
Door cabinet and
mounting plate is
18 gauge type 304 SS
with a satin finish.
Features viewing slot(s)
to reveal toilet tissue
rolls inside. Includes
tumbler lock for security



**Twin 9' Jumbo Roll
Toilet Tissue Dispenser**
Overall Size: 20 ³/₄" x 6 ¹/₄" x 11 ¹/₂"
PA0040 \$161.00

Washroom Accessories

Paper Towel Dispensers

Multiple Hands Free Styles In Stock



Surface Mounted Roll Towel Dispenser
Hi-impact plastic.
8" diameter roll.
PA54338 \$77.00



Surface Mounted Dispenser
Stainless Steel
PA0210 \$56.00



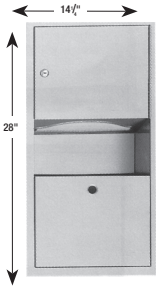
Surface Mounted Towel Dispenser for Compact Areas
Stainless Steel
PA0215 \$55.00



Automatic
Automatic Surface Mounted Towel Dispenser for Compact Areas
Black Plastic 8" Roll
PA59590 \$77.00

Towel / Waste Receptacles

*Verify rough wall opening with your order.



Paper Towel Dispenser and Waste Receptacle
Provided with removable 2 gal. (7.6L) waste container.
PA0462AD \$175.00

Recessed unit 4" deep.
Rough wall opening
12 3/4" x 26 1/2" x 4 1/4"*



Paper Towel Dispenser and Waste Receptacle
Removable 12 gal. (46L) Stainless steel waste receptacle.
PA0469 \$349.00

Recessed unit 4" deep.
Rough wall opening
15 3/4" x 54 1/2" x 4 1/4"*



Surface Mounted Napkin Disposal
Stainless steel finish.
PA0852 \$36.00



Surface Mounted Waste Receptacle 12 gal.
PA0826 \$155.00

Washroom Accessories



Automatic

Touch Free LTX Soap Dispenser

Compact, easy-to-use unit, ideal for tight spaces. Limits cross contamination. Batteries and soap not included. White or SS
Capacity: 40 fluid ounces.
Overall Size: 10 1/2" x 4" x 5 3/4"
PA1TX-12 \$46.00

Surface Mounted Horizontal Liquid Soap Dispenser

Stainless steel with a #4 satin finish.
Capacity: 40 fluid ounces.
Overall size: 8 1/4" x 4 3/4" x 3"
PA0345 \$36.00



Vertical Soap Dispenser

Stainless steel with a #4 satin finish. Contains an all purpose soap valve.
Capacity: 40 fluid ounces.
Overall Size: 4 3/4" x 8 1/8" x 5 1/4"
PA0347 \$36.00

Straight Liquid Type

34-ounce capacity
PA0147



4" Spout \$39.00
6" Spout \$48.00



Polyglobe Bottle
PA1322
\$16.00

Shelves



Stainless Shelving

PA0692
12" long \$42.00
18" long \$45.00
24" long \$48.00

Call us for additional sizes



Klutch Mobile Device Holder Satin Finish Wall or Stall Mounted with front hook



PA635 \$154.00
(Devices shown not included)

Baby Changing Stations

- Engineered and tested to withstand a static load of 200 pounds.
- FDA approved high-impact plastic. (Also available in stainless steel.)
- Sanitary, disposable platform liner. PA-PL.
- Safety holding straps.
- Five Year Manufacturer's Warranty
- Shipping weight 40 pounds.

*Note SS Baby Changing Stations Available

Changing Station

KB-300-00 Cream \$338.00
KB-300-01 Gray \$338.00

*Additional colors and styles available via special order



Unit Dimensions

Height: 22" Width: 35"

Depth: 4" Closed

Extension from Wall when Opened: 22 1/2"

Ask us about adult changing stations or additional styles and mounting options

Washroom Accessories

Corner Guards

18 ga. SS 90° angle



Overall Size:
1½" x 1½" x 48"
Model 0533-1-2
\$59.00



Overall Size:
3½" x 3½" x 48"
Model 0533-1-4
\$86.00

Custom Sizes Available

Check with us
if you need
building specialties
not shown in
our catalog or
website!

Hand Dryers



**Turbo ADA™
Surface Mounted
ADA-Compliant
Hand Dryer**
High Speed
PA0199 \$474.00

Specifications:

Voltage/Frequency: 115VAC-120VAC 50Hz/60Hz
Net Weight: 8.5 lbs. (3.85 kg)
Dimensions: 10 5/8" H x 8 15/32" W x 4" D
(Conforms to ADA)
Wattage: 1000 W



**Surface Mounted
ADA-Compliant
Hand Dryer**
Sprayed Nickel or White
PAHU02 \$949.00

Specifications:

Voltage/Frequency: 120/270 VAC 50Hz/60Hz
Net Weight: 8.2 lbs.
Dimensions: (H) 5 3/4" x (W) 17 7/8" x (D) 10 3/4"
Wattage: 1000 W



Ask about
the ADA
Recess Kit



Xlerator Hand Dryer

- Dries hands 3 times faster (10-15 seconds)
- Uses 80% less energy than other hand dryers
 - Stainless Steel
 - 110-120 VAC

Overall Size: 11 3/4" x 11 1/16" x 6 1/16"

XL-SB Xlerator® \$838.00



Excel Thin Air Hand Dryer

- Meets ADA requirements
- 900 Watts (Heat On), 300 Watts (Heat Off)
- Adjustable speed and sound control
 - Available in White and SS
 - 110-120 VAC

Overall Size: 9 5/32" x 13 15/16" x 3 15/16"

TA-ABS White \$536.00

TA-SB SS \$586.00

dyson



WORLD
DRYER



ASI

AMERICAN SPECIALTIES, INC.

BOBRICK

Call or e-mail your request for
information on our complete line of dryers.

Washroom Accessories

Commercial Shower Accessories



Commercial Shower Curtain
All sewing is lock stitched. Vinyl
Film in White Opaque. Fed. Spec.
1-C780A Style 1 and L-P375C
Type II Class 1

VF800

36" x 72" \$24.00
42" x 72" \$27.00
48" x 72" \$30.00
60" x 72" \$31.00
72" x 72" \$38.00

**Stainless Steel
Shower Rod with Flanges**

1214-36 \$42.01
1214-48 \$49.57
1214-60 \$57.13
1214-72 \$64.71



Shower Curtain Hook

1 5/16" opening for round rod
.091 Stainless Steel Finish
\$2.00 each



Phenolic Shower Seat
(left or right hand)

PA8206

L \$344.00 R \$344.00



**Specify Manufacturer
PA-Key \$8.00**



PA-Key/Lock \$21.00
Bring Sample

Mirrors

Contact us for plate glass mirror. Polished edge and beveled available.

*Fixed Tilt Available



Channel Framed Mirrors

PA1824 \$79.00
PA1830 \$89.00
PA1836 \$99.00
PA2436 \$119.00



**S/S Reflective Surface
Mirrors**

*Without frames,
hardboard backing.*

PA 18" x 36" S \$176.00
PA 24" x 36" S \$189.00



sales@partitionsco.com

Partitions|Accessories|Lockers|Corner Guards & Wall Protection
Visual Display Boards|Fire Extinguishers|Cabinets|Operable Walls
Rolling Window Shades|Mirrors|Shower Glass

*Contact us for quotes on any of these items,
ask about our overstock inventory!*



Certified Woman Owned Business (SWOB)

Washroom Accessories – Matte Black

Matte Black Powder Coated Snap Flange Grab Bars



PA-3801-18-MB 18" Grab Bar Snap On Flange \$36.00
PA-3801-36-MB 36" Grab Bar Snap On Flange \$42.00
PA-3801-42-MB 36" Grab Bar Snap On Flange \$48.00



Surface Mounted Horizontal Liquid Soap Dispenser
Matte Black Powder Coated Finish.
Capacity: 40 fluid ounces.
Overall size: 8¹/₄" x 4³/₄" x 3"
PA0345-MB \$48.00



Shelf with Toilet Paper Holder
Overall Size: 18" x 5"
PA0697 GAL-MB \$203.00



Surface-Mounted Toilet Tissue Dispenser and Utility Shelf
Matte Black, Two Rolls
Type 304, 14 gauge Stainless steel in matte black finish
PA B-540-MB \$169.00



Toilet Tissue Dispenser Double
Matte Black
PA7305-2-41
\$38.00



Toilet Tissue Dispenser Single
Matte Black
PA7305-41
\$26.00



Matte Black Surface Mounted Dispenser
Matte Black
PA0210-MB \$72.00



Matte Black Surface Mounted Seat Cover Dispenser
Matte Black finish. Loads from bottom. Capacity 250 paper seat covers.
Overall Size:
15³/₄" x 11" x 2¹/₄"
PA0477SM-MB \$104.00



Matte Black Surface Mounted Dispenser
SMatte Black Finish
PA0210-MB \$51.00



Matte Black Stainless Steel Inter-Lok Angle Frame Mirror
Matte Black Finish
18" wide x 36" high (457x914mm)
PAA18x36-MB \$132.00

Specialties

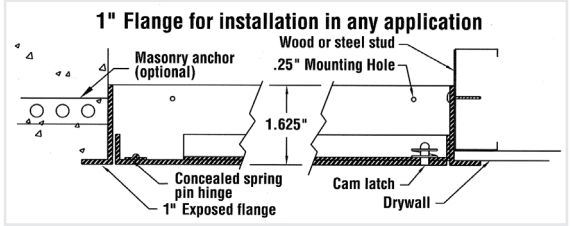
Access Panel



**White
Paintable
Surface**

PA L-MPG

*Non-rated, multi-purpose access panel
for all applications*



Top Elevation

- PA L-MPG 8" x 8" \$39.00
- PA L-MPG 12" x 12" \$49.00
- PA L-MPG 18" x 18" \$79.00
- PA L-MPG 24" x 24" \$109.00

Fire Extinguishers and Cabinets

Full line of extinguishers and cabinets available.



Cabinet

White
Outside trim dim. 27 1/2" x 13"
6" Deep, 4" Recess in Wall
Full Glass*
PA2409-6R-FG
\$156.00
Half Vertical Glass*
PA2409-6R-VDuo
\$156.00



Cabinet

Stainless Steel
Outside trim dim. 27 1/2" x 13"
6" Deep, 4" Recess in Wall
Full Glass*
PASS2409-6R-FG
\$296.00
Half Vertical Glass*
PASS2409-6R-VDuo
\$296.00



**Surface
Mount
Cabinet**
PA2409-SMFG
\$186.00

**Fire Extinguishers sold separately*



**Surface
Mount
Cabinet**
PA2409-SMVD
\$141.00



**Fire Extinguisher
PAMP-5
\$93.00**



**Fire Extinguisher
PAMP-10
\$119.00**

**FIRE
EXTINGUISHER
DECAL**

**DECAL
\$10.00**

**PAFE DC-Decal
18" x 1"
\$10.00**

Specialties

Signs *Stores • Hotels • Schools • Offices • Restaurants • Other Public Places*



PA3801



PA3802



PA3803



PA3804



PA3805



PA3806

Pictogram Bathroom Sign

Meets ADA requirements with and without HCPD

Pictogram: 1/32" raised tactile x 6" min.

Durable plastic material.

Stock Colors: Black with white lettering

Overall Size: 6" x 9"

PA3801 NON-ADA Men \$23.00

PA3802 Men HDCP \$23.00

PA3803 NON-ADA Women \$23.00

PA3804 Women HDCP \$23.00

PA3805 NON-ADA Unisex \$23.00

PA3806 Men/Women HDCP \$23.00

Also Available

PA3811 Tactile Exit Sign \$19.00

DOOR TO REMAIN UNLOCKED DURING BUSINESS HOURS

54750 \$19.00 each

Visual Display



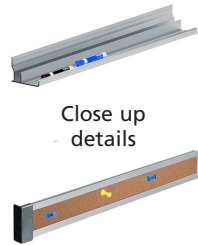
- 3/4" Trim
- Flat Chalk Tray
- 2" Map Rail
- Magnetic

9800 Series White Board

4'x4' White Board PA-4x4WB
\$199.00

4'x6' White Board PA-4x6WB
\$277.00

4'x8' White Board PA-4x8WB
\$362.00



Close up
details

We have available a complete line of Visual Display Products and can customize to your individual needs at a competitive price.

[Ask About Sizes](#)

Index

Access Panels	18
ADA Signs	19
Baby Changing Stations.	14
Bumpers.	10
Bracket Kits	8
Brackets	9
Commercial Shower Accessories	16
Corner Guards	15
Device Holders	14
Door Hardware Kits	6
Door Pulls	10
Fire Extinguishers & Fire Extinguisher Cabinets	18
Grab Bars	11
Hand Dryers.	15
Headrail	11
Hinges	5
Hooks.	10
Keepers.	10
Keys	16
Kits	8
Latches.	6
Matte Black Accessories	17
Mirrors.	16
Paper Towel Dispensers	13
Pilaster Post	11
Paper Holders.	12
Sanitary Napkin Disposals	13
Screws/Bolts - Partitions	7
Shelves.	14
Shoes	11
Shower Accessories	16
Soap Dispensers	14
Specimen Passthrough	11
Toilet Partition Replacement Material and Stock Color Selection	2-3
Waste Receptacles	13
Visual Display	19

Order Information

There are several convenient ways to order:

1. Phone: 480-969-6606 or 1-800-795-6607
 2. E-mail: sales@partitionsco.com
 3. Website: partitionsco.com
- Online shopping cart now available!

Regarding Damages Or Shortages of Shipments

Your merchandise was received by the truck line in good condition, so any damages or shortages are the responsibility of the carrier; therefore note the following points:

1. Please inspect your shipment carefully upon arrival. Look for any apparent damage and also see if the number of pieces matches the total as listed on the freight bill.
2. Any damages or shortages must be noted in detail on all copies of the freight bill by the driver, and signed by him. Do not sign the freight bill without these notations being made, as they are absolutely necessary in order for you to file your claim.
3. If someone other than yourself is going to receive your shipment, be sure that they are aware of this procedure.
4. **In the event that there is any damage or shortage, ask the driver to have his company supply you with necessary claim forms and procedures.**

Payment Terms:

We accept: Visa  MasterCard  American Express 

F.O.B. our warehouse with cost of freight added to material price.

Applicable taxes will be added.

*Large orders subject to 3% CC Fee

All prices and availability are subject to change without notice.

RETURNING MATERIAL

If you find that the material received does not fit your needs contact us immediately.

No returned merchandise will be accepted unless our customer service department has given prior authorization. All transportation charges must be pre-paid by the purchaser and are not refundable. Material must be returned in original cartons or in an acceptable shipping manner to avoid damage. All returned material subject to a minimum 35% restocking charge.

Any dispute will be settled only by Arizona law in Maricopa County.

**Call 480-969-6606 or 1-800-795-6607
for additional catalogs.**

If you need something not shown in our catalog, let us know.

We've Got You Covered Since 1978



Partitions & Accessories Co.

1220 S. Pasadena | Mesa, AZ 85210

PRESORTED
STANDARD
US POSTAGE
PAID
MESA, AZ
PERMIT #97

ROC# 110352

26770